



**LILY® SUGAR'N CREAM
TABLE RUNNER
(TO KNIT)**

SIZE

Approx 14 x 46 ins
[35.5 x 117 cm].

MATERIALS

Lily® Sugar'n Cream
(2.5 oz/70.9 g)

Main Color (MC):
(White) 5 balls
Contrast A: (Blue) 1 ball
Contrast B: (Green) 1 ball

Size 4.5 mm (U.S. 7) knitting
needles **or size needed to
obtain gauge.**

GAUGE

20 sts and 26 rows = 4 ins
[10 cm] in stocking st.

INSTRUCTIONS

Note: When working from chart, wind small balls of the colors to be used, one for each separate area of color in the design. Start new colors at appropriate points. To change colors, twist the two colors around each other where they meet, on WS, to avoid a hole.

With MC, cast on 61 sts.

1st row: (RS). K1. *P1. K1. Rep from * to end of row.

This row forms seed st pat.

Work a further 12 rows in seed st pat.

****Next row:** (WS). Pat 30 sts. Inc 1 st in next st. Pat to end of row. 62 sts.

Proceed as follows:

1st row: With MC, work 20 sts in seed st pat. Work 1st row of Chart A in stocking st across next 22 sts, reading row from **right** to left. With MC, work 20 sts in seed st.

2nd row: With MC, work 20 sts in seed st pat. Work 2nd row of Chart A in stocking st across 22 sts, reading row from **left** to right. With MC, work 20 sts in seed st.

Chart is now in position. Cont working Chart A to end of chart.

Next row: (WS). Work 30 sts in seed st pat. Work 2tog. Work in seed st pat to end of row. 61 sts. ******

Work 3 rows in seed st pat.

With A, work 2 rows in stocking st.

Next row: With MC, knit. With MC, work 3 rows in seed st pat.

With B, work 2 rows in stocking st.

Next row: With MC, knit. With MC, cont in seed st pat until work from beg measures 40 ins [101.5 cm], ending with RS facing for next row.

With B, work 2 rows in stocking st.

Next row: With MC, knit. With MC, work 3 rows in seed st

pat.

With A, work 2 rows in stocking st.

Next row: With MC, knit.

With MC, work 3 rows in seed st pat.

Work from ****** to ****** as given above.

Work 13 rows in seed st pat. Cast off in pat.

FINISHING

With B, embroider teacup and handle using stem st as illustrated.

STEM STITCH

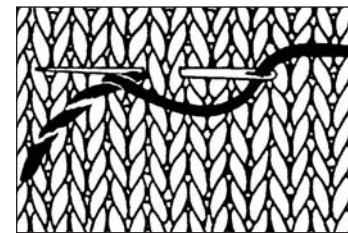
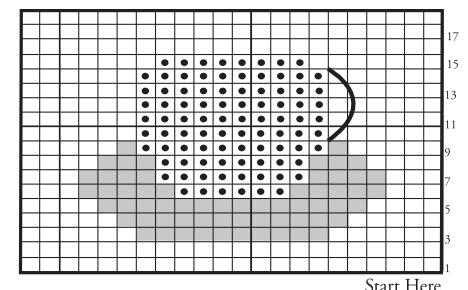


CHART A



KEY

- = MC
- = Contrast A
- = Contrast B
- = Stem st with B

ABBREVIATIONS

www.sugarncream.com/glossary

